

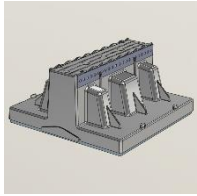


Roof Top BLOX

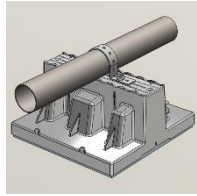
Adjustable Piping Support

US PAT. 7,731,131 CAN. PAT. 2,675,158

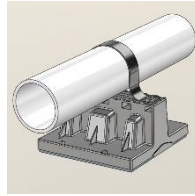
Roof support application configurations index using Roof Top Blox and accessories



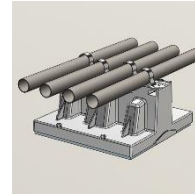
RTB-01:
Roof Top Blox



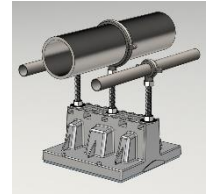
011: Perforated
Pipe Strap



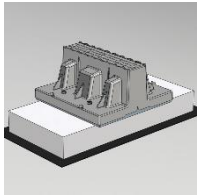
012: Single
Pipe U-Clamped



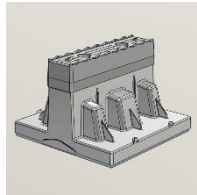
013: Multiple
Pipes Clamped



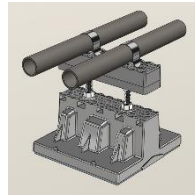
014: Elevated
Split Ring Clamps



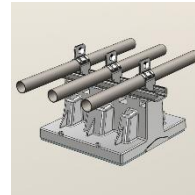
015: Concrete
Anchor Weights



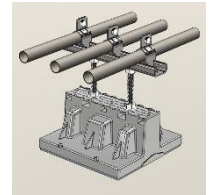
021: 1-1/2"
Height Extension



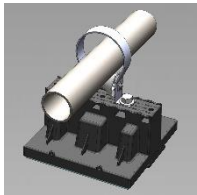
022: Elevated
Height Accessory



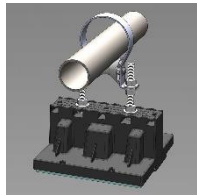
041: Attached
Strut



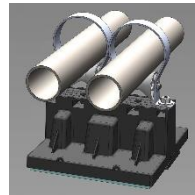
042: Elevated
Strut



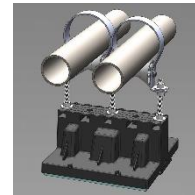
051: 1"-3"
Pipe Roller



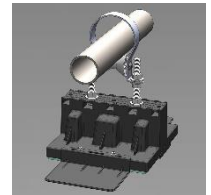
052: Elevated 1"-3"
Pipe Roller



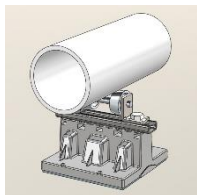
053: Two
1"-3" Pipe Rollers



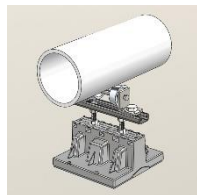
054: Two Elevated
1"-3" Pipe Rollers



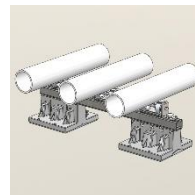
055: Blox with
1"-3" Pipe Roller &
Securing Brackets



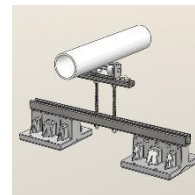
061: 4"-6"
Pipe Roller



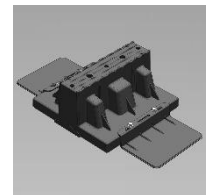
062: Elevated
4"-6" Pipe Roller



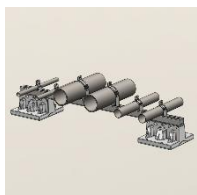
063: Two Blox with
Multiple 4"-6"
Pipe Rollers



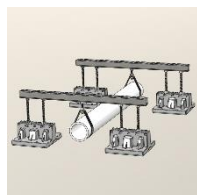
064: Two Blox with
Elevated 4"-6"
Pipe Rollers



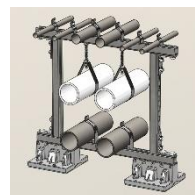
071: Blox with
Securing Brackets



081: Two Blox Bridge
with Multiple Pipes
& Strut Clamps



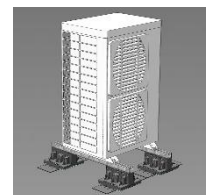
082: Two Blox
Bridge with
Underhung Piping



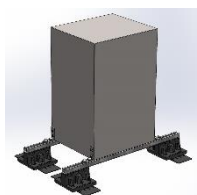
083: Two Blox
2-Tier Bridge
Piping Rack



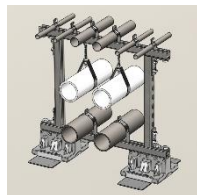
084: Two Blox
Ductwork Stand



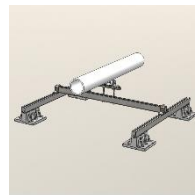
087: Four Blox
Condensing Unit
Support



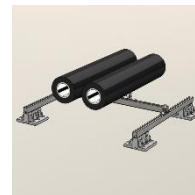
088: Mechanical/
Electrical Stand



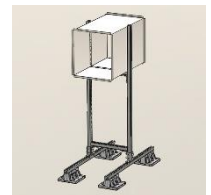
089: Two Blox 2-Tier
Bridge Piping Rack
With SCB-07



091: Four Blox
With Elevated
4"-6" Rollers



092: Four Blox
with 4"-6" Rollers for
Insulated Pipe



093: Four Blox
Ductwork Stand